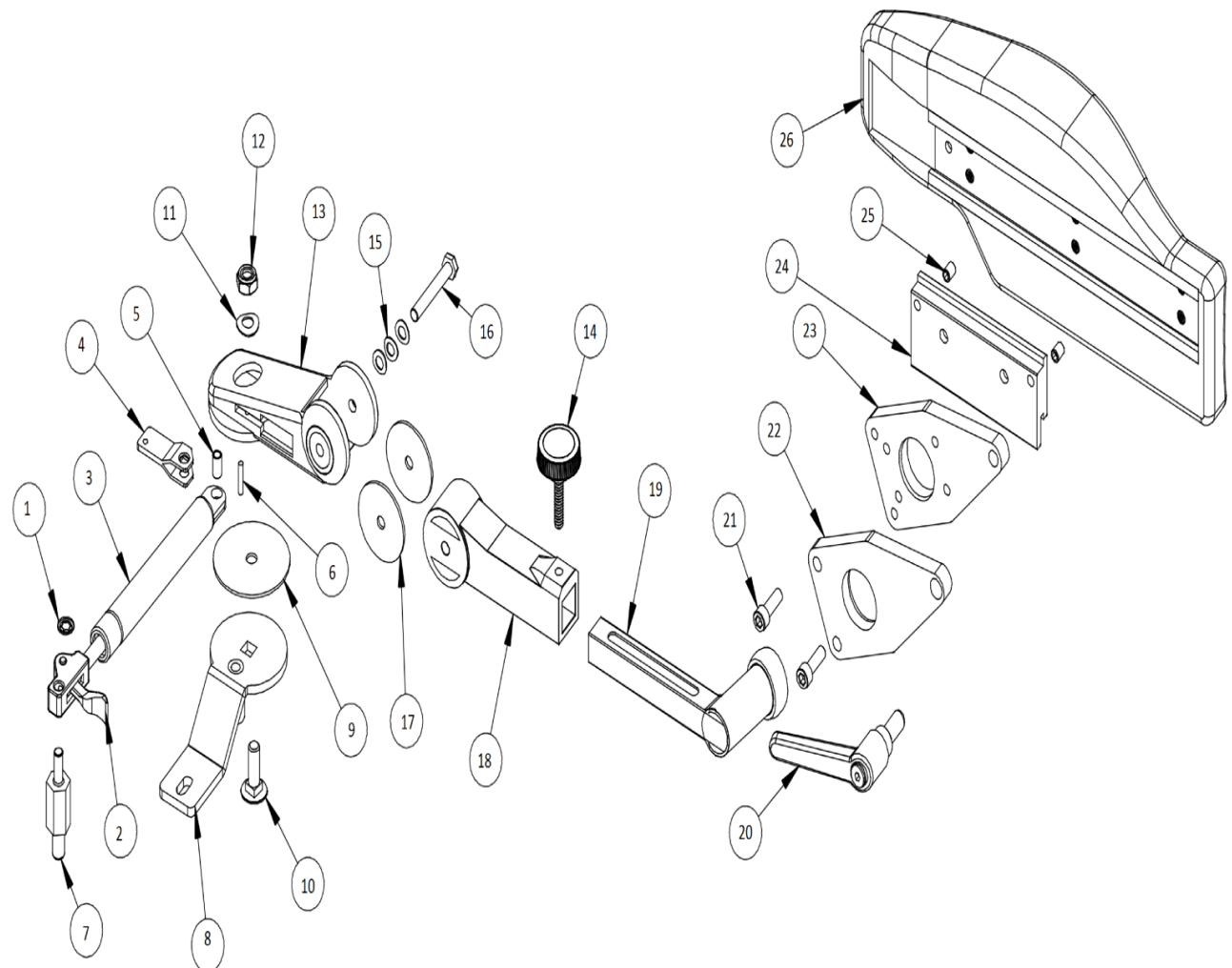


# 2000 Stabil Ergo Flex

ART. NO.	DESCRIPTION
1. 970016	Starlock washer 8mm
2. 80251	Lower gas spring fastener
3. 970032	Gas spring
4. 70194	Upper gas spring fastener
5. 70196	Stainless steel rivet
6. 70097	Pin 4x20
7. Contact	Lower seat adapter
8. Contact	Upper seat adapter
9. 70354	Friction washer 70mm
10. 970033	Carriage bolt M10x30
11. 999379	One wave washer M10
12. 999380	Lock nut M10
13. 80023	Back arm right
80024	Back arm left
14. 970030	Hand screw M8x15
15. 970009	One wave washer M8
16. 997909	Bolt M8x60
17. 999370	Friction washer 50mm
18. 80022	Front arm; long
19. 81271	Top part stable; right
81272	Top part stable; left
20. 999377	Zink knob M12
21. 990516	Allen screw M8x25
22. 80049	Clamp
23. 80092	Threaded clamp
24. 80036	Slide rail
25. 999369	Stop screw M8x10
26. 80591	Pad E incl. rail right
80939	Pad E incl. rail left



FRAMECO AB. Installatörvägen 19. 461 73 Trollhättan.  
 Telefon 0520-48 82 30.  
 www.frameco.se

**Frameco**   
 THE ARMREST MANUFACTURER